

**J**oin 150 community and business leaders as they each step into the shoes of a hardworking Philadelphia public school principal and make a commitment to the education of our children.

**Honorary Co-Chairs**

**The Honorable  
Michael A. Nutter**  
Mayor  
City of Philadelphia

**Arlene C. Ackerman, Ed.D.**  
Superintendent  
The School District of Philadelphia

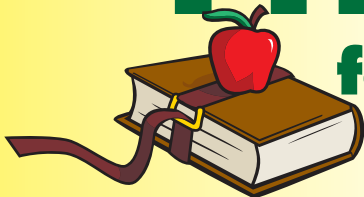
**Renee Archawski**  
Executive Director  
Greater Philadelphia Cares

**Robert Bowman**  
Managing Director  
Merrill Lynch

**Principal for a Day** is  
presented in partnership with:

**Call 215.564.4544  
or visit [www.gpcares.com](http://www.gpcares.com)  
to sign up today!**

# Principal for a Day



greater  
**Philadelphia Cares**<sup>™</sup>  
volunteer. be the change.



**Merrill Lynch**  
**Wealth Management**  
Bank of America Corporation

